

# Houseboats

and

# Floating offices



**SAFARI  
PONTOON  
BOATS**



[www.safariboats.co.uk](http://www.safariboats.co.uk)  
[info@safariboats.co.uk](mailto:info@safariboats.co.uk)

Call us on 02920 217845 or 07985 169101



From concept to design and build



Available in a range of sizes

Varying levels of completion from shell to completed unit.

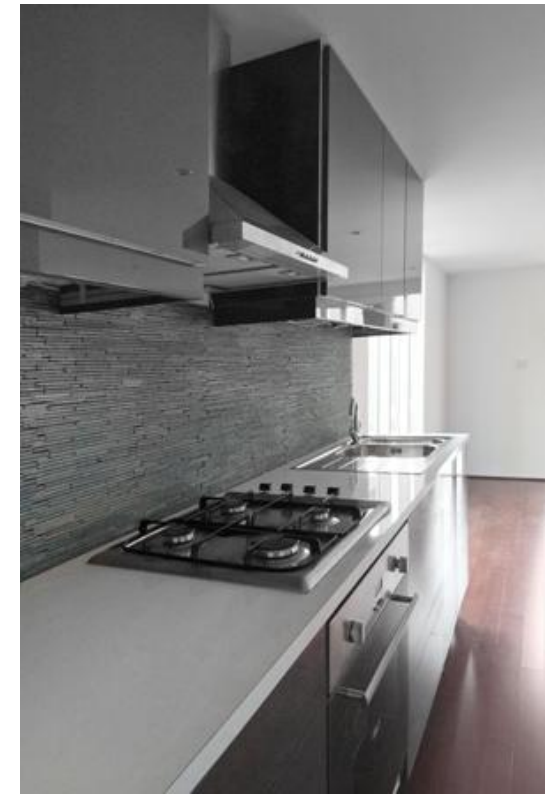
Ideal for different budgets

Engines can be added

We welcome enquiries from  
commercial developers



High Quality Interiors



## 40ft x 12ft typical layout

### Lounge 14' x 11'6"

Open plan lounge area with double patio door opening onto the foredeck.

Features large full height double glazed windows both port and starboard, with top opening windows.

To include wall mounted panel heater and electric sockets. Walls and ceiling to a painted finish. Laminate flooring to the clients specification.

### Shower room 8' x 6'

To include corner shower unit with tiling behind. Wall mounted basin, WC and heated towel rail. Flooring in waterproof vinyl. To include single double glazed opening window with obscured glass and extractor fan. Wall painted to a water resistant finish.

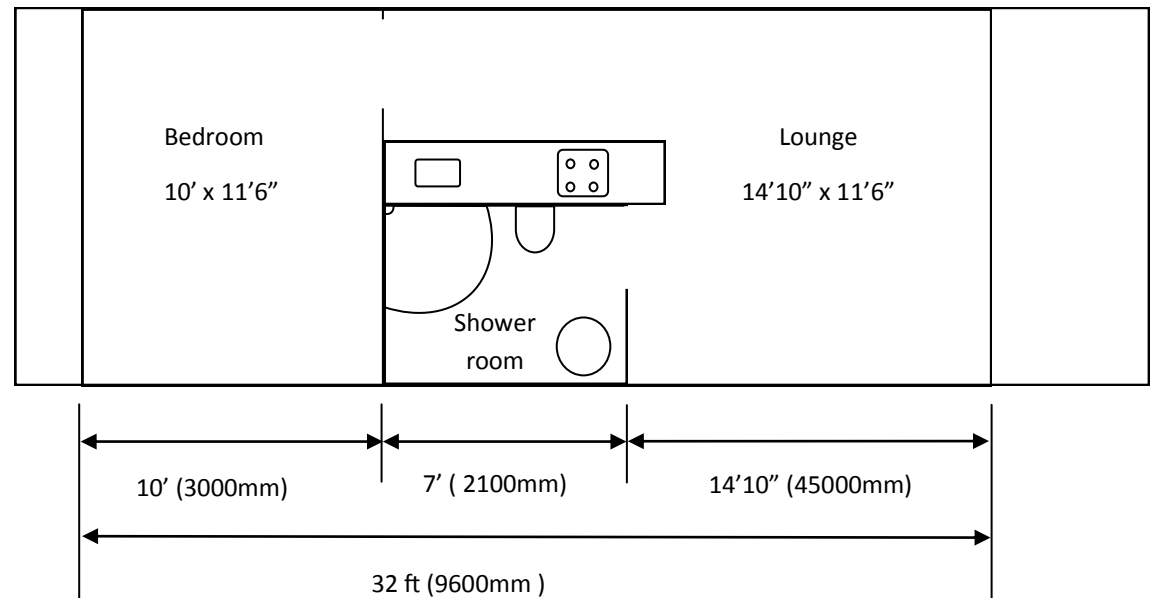
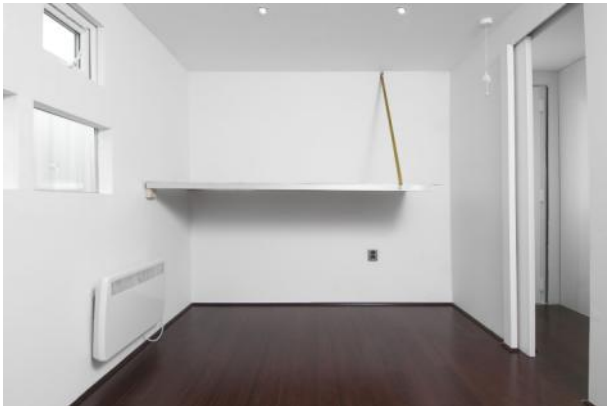
### Galley kitchen 8'

Features electric hob, fan oven, fridge with freezer unit. Stainless steel sink with drainer and stainless taps. Formica work top to the clients choice. 2 x 600mm eye level wall units and stainless steel cooker extractor hood. 2 x 600mm under surface unit, undersink unit with 3 draws.

### Rear bedroom 11'6" x 10'

Large open plan rear bedroom with patio doors opening onto rear deck. To include wall mounted panel heater and electric sockets. Walls and ceiling to a painted finish. Laminate flooring to the clients specification.

To include double glazed opening windows to port and starboard.



### Additional features

Internal roof height of 7'2" giving an open spacious feeling

Cost saving LED ceiling mounted spotlights throughout. Fully insulated to 100 mm throughout to keep you cool in summer and warm in winter.

Onboard water and waste holding tanks reduce the cost and frequency of "pumping out"

Ship to shore marina power socket.

### Outside spaces

Foredeck of 12' x 5' and aftdeck of 12' x 2'6" with aluminium safety railings all round. To include 2 x front gates. Including exterior light to fore and aft.

Ladders to roof deck.

Roof deck of 12' x 12' with aluminium surround railings. To include exterior lighting.

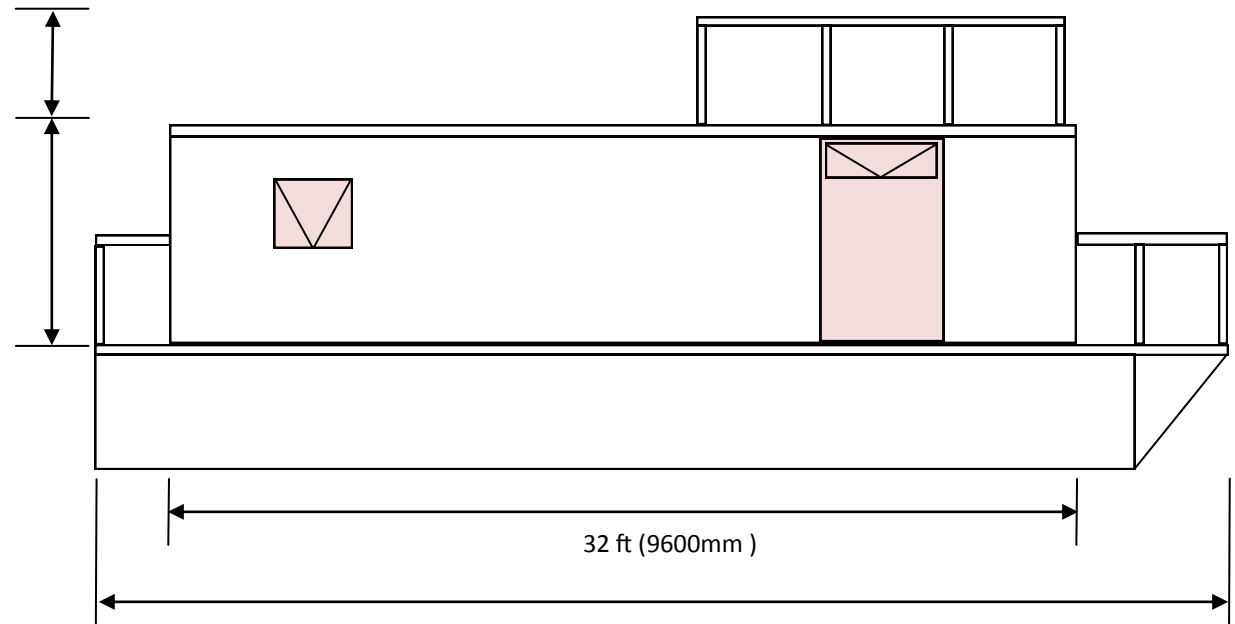
Glass canopy to cover front and rear doors.

## Technical specifications

Length	12 m ( 40' )	1000mm
Beam	3.6m ( 12' )	2400mm
Weight( nominal)	7500kgs	
Draft	600mm	

## Construction

Hulls	foam filled Fibreglass
Frame	galvanised steel
Cladding	painted aluminium composite panels
Glazing	UPVC framed toughened doubled glazed units
Roof	coated epdm ( rubber membrane) on water resistant OBS roof deck
Insulation	100mm rockwool



Naval Architect : Colin Silvester

Structural engineer : Roy Blackburn



Aluminium cladding with high quality painted finish ensuring no rust issues.

Steel structure to class 1 5950 UK building regulations. Using the steel framing system allows us to produce a range configurations without complex and expensive re-designs.

Wall insulation to 100 mm giving high thermal values

High fire retardancy

CE rating to CAT D ( RCD regulations )including stability, buoyancy and structural calculations.